

DF/

DAMON FARBER LANDSCAPE ARCHITECTS



Corporate Portfolio

Contact

THOMAS WHITLOCK, ASLA / PRESIDENT

612.332.7522

twhitlock@damonfarber.com

www.damonfarber.com



DAMON FARBER LANDSCAPE ARCHITECTS

Damon Farber is an award winning landscape architecture and site planning firm focused on innovative design, research, and collaboration. Our portfolio includes exceptional outdoor environments of varied scales which reflect sensitivity to the natural environment and a dedication to the needs of our clients. We are an experienced team of landscape architects who explore and understand all contributing influences on a project and develop solutions with long term viability. Our work is enriched through frequent partnerships with allied design professionals, engineers, ecologists, historians and artists.

Damon Farber's multifaceted firm strengths include inspiring design, community leadership and engagement, cultural landscapes, campus planning, extraordinary graphic abilities, disciplined materials research, and fiscal responsibility. For over 37 years, our portfolio has consistently reflected a composed clarity and strong contribution to the built environment.

FIRM FACTS

- > Established 1981
- > 37 Years In Service
- > Location: Minneapolis, MN
- > Legal Status: Minnesota S Corporation
- > Ownership: Thomas Whitlock, ASLA
- > 8 Landscape Architects-In-Training
- > 8 Landscape Architects
- > 4 LEED Accredited Professionals
- > Registered in 8 states: MN, IA, SD, ND, IL, MO, KY and PA.

SERVICES

- > Landscape Architecture
- > Site and Master Planning
- > Sustainable Design
- > Urban Design

KEY PRACTICE AREAS

- > Community
- > Corporate
- > Cultural/Historic
- > Education
- > Government
- > Healthcare
- > Housing
- > Mixed-Use
- > Parks & Recreation
- > Transportation
- > Zoo



Corporate Experience

MASTER PLANNING

3M Center Framework Plan
St. Paul, MN

Aveda Corporate Campus
Blaine, MN

Boston Scientific
Arden Hills, MN

Cargill Corporation
Minnetonka, MN

Ecolab Schuman Campus
Eagan, MN

The Link
Edina, MN

Target Northern Campus Master Plan
Brooklyn Park, MN

BUILT WORK

3M World Headquarters Bldg. 220
3M Center, St. Paul, MN

3M Community Plaza
3M Center, St. Paul, MN

3M Laboratory Bldg. 280
3M Center, St. Paul, MN

ADC BCG Facility
Shakopee, MN

American Medical Systems
Eden Prairie, MN

Ameriprise Financial
Minneapolis, MN

American Express Financial Services
Minneapolis, MN

AT&T Headquarters
Bloomington, MN

Boston Scientific
Maple Grove, MN

Carlson Center Corporate Offices
Minnetonka, MN

Coloplast North American Headquarters
Minneapolis, MN

Ecolab World Headquarters
St. Paul, MN

Fairview Data Center
Minneapolis, MN

Federated Insurance Company
Owatonna, MN

Hormel
Austin, Minnesota

ING Campus
Minneapolis, Minnesota

Lifetouch
Eden Prairie, MN

Margaret A. Cargill Philanthropies
Eden Prairie, MN

Northwest Airlines
Mendota Heights, Minnesota

Pioneer Public Television
Appleton, MN

Select Comfort Headquarters
Plymouth, MN

St. Jude Medical
Plymouth, MN

T3 Building
Minneapolis, MN

Target Northern Campus Bldgs D, E, F
Brooklyn Park, MN

Target Financial Services
Minneapolis, MN

UnitedHealth Group
Minnetonka, MN

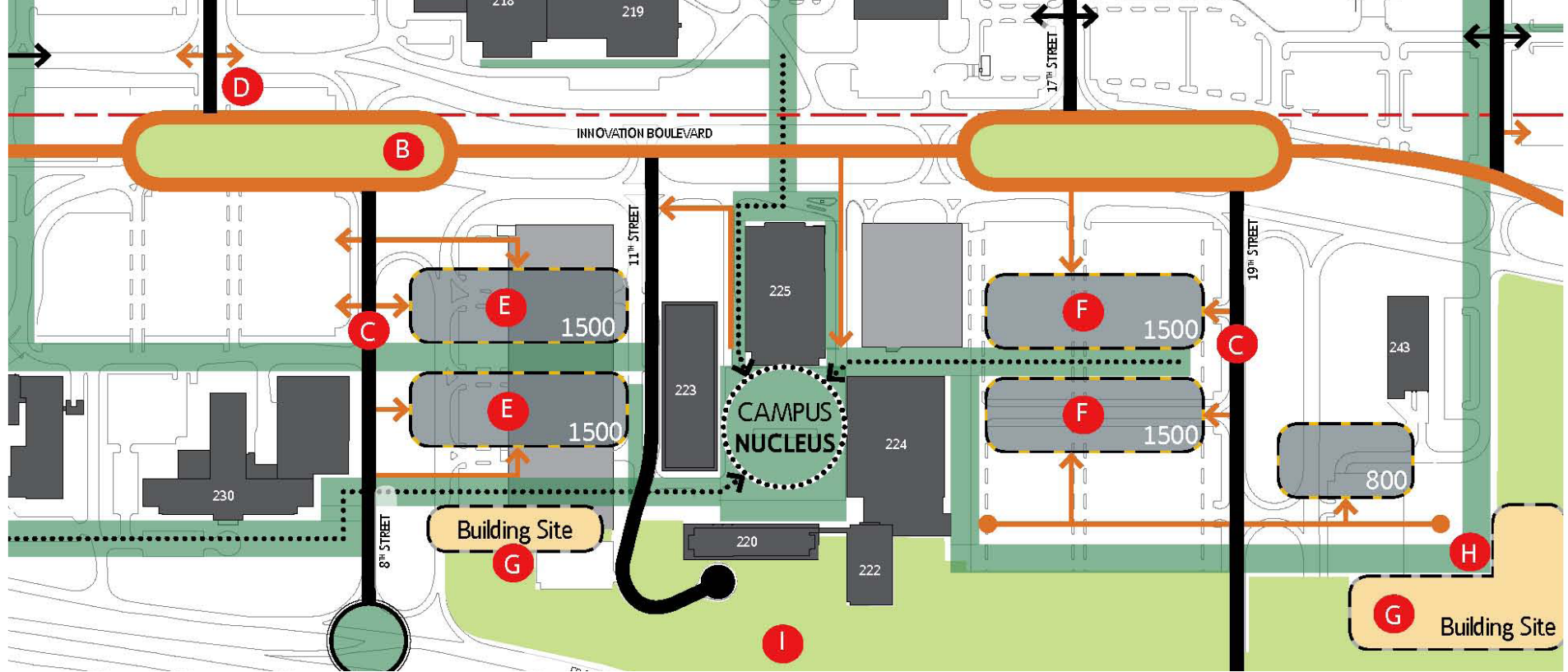
Uponor North American Headquarters
Apple Valley, MN

Upsher Smith Headquarters
Maple Grove, Minnesota

Wells Fargo Campus
Shoreview, Minnesota

Wilder Foundation Headquarters
St. Paul, Minnesota

Xcel Energy Headquarters
St. Paul, Minnesota



3M Corporation Campus Framework Plan

Damon Farber and 3M collaborated to develop a comprehensive Framework Plan. The plan is intended as a flexible tool that will guide future improvements and development. 3M Center was planned and constructed during the 1960's and 1970's. The campus is dominated by the automobile and surface parking lots. The layout of buildings and roadways is not conducive to collaboration and employee wellness. 3M realized that a comprehensive plan was needed to prioritize and guide the transformation of the campus to align with today's needs. In addition to guiding the transformation the plan will market the vision and help secure the needed funding.

- > The Framework Plan depicts the placement of human-built elements such as building locations, roads, parking areas, and open space, and the relationships between these elements on the land. Goals were developed to create a comprehensive, clearly organized campus with distinct gateways, open spaces and circulation patterns.
- > Envisioned improvements include reduction in surface parking, enhanced pedestrian and bicycle connectivity, improved wayfinding, augmented landscaping, and a greater emphasis on sustainability.

PROJECT FACTS

- + Location: Saint Paul, MN
- + Completed: 2012
- + Size: 490 acres

REFERENCE

Rick DeMarchis
3M Plant Engineering
651-248-4649
rademarchis1@mmm.com





3M Corporation Company Headquarters Landscape Design



The landscape design resembles the relaxed and natural “New Wave Planting Style”. The layout is less controlled and geometric than traditional gardens. The landscape will evolve into an idealized version of nature and support biodiversity with an integrated planting palette.

- > Flowering perennials, ornamental grasses and deciduous shrubs will harmonize in the landscape to provide a constantly changing range of colors, textures, and form. Large masses of complementary plants will be grouped together to address the scale and render a powerful aesthetic.
- > In the winter months the garden will continue to provide structure to the landscape. Ornamental grasses, crab apple trees with persistent fruit, and perennial seed heads will specifically stand out through the white snow.
- > Lawn, stone and concrete paths will provide visitors and employees an opportunity to experience the garden up close. Small seating and picnic areas are scattered about providing destinations in the landscape.
- > Existing and proposed trees will render shade and vertical scale to the environment. The design will thoughtfully group plants in stunning combinations that look and grow well together.

PROJECT FACTS

- + Location: St. Paul, MN
- + Size: 6 acres
- + Completed: 2013

REFERENCE

Tom Heim
Director – 3M Project Community
651-736-0541
tjheim@mmm.com



3M Corporation Carlton Science Center



This collaboration was an opportunity to deliver an innovative and complementary landscape for a new state of the art research and development building. The building's primary focus is to maintain the company's vitality of innovation and technology, and houses over 700 researchers and scientists.

- > Developed integrated site circulation between vehicles, service trucks, specialty buses, pedestrians and bicycles that optimized safety by clear delineation of pavements.
- > 580 car parking lot is sub-divided into 4 smaller segments by long linear medians that are each flanked by pedestrian sidewalks and filled with abundant shade trees, and native plants providing an enhanced experience for employees and visitors as they progress from parking to entry plaza.
- > Expansive entry plaza has integrated linear layers of specialty paving, concrete unit pavers, custom site furnishings, plantings and lighting which harmoniously break down the scale of the space, relate to the building, and create a comfortable and complementary foreground to Lab 280.
- > Custom over-sized site furniture was designed in order to address the massive scale of the building and complement the palette of materials.

PROJECT FACTS

- + Location: 3M Center, Saint Paul, MN
- + Size: 18 acres
- + Completed: Fall 2015
- + Budget: \$1,250,000

AWARDS

- + USGBC LEED Silver Certification

REFERENCE

Roger F Spinner | Principal Project Engineer
3M Facilities Engineering
651.737.2981
rfspinner@mmm.com



United Health Group Company Headquarters Landscape Design



United Health Group, a Minnesota based fortune 100 company, worked with Damon Farber Associates to plan and build a new office tower on their existing corporate campus. Careful planning delivered a successful project that complements the existing buildings and seamlessly integrates with the rolling and romantic landscape.

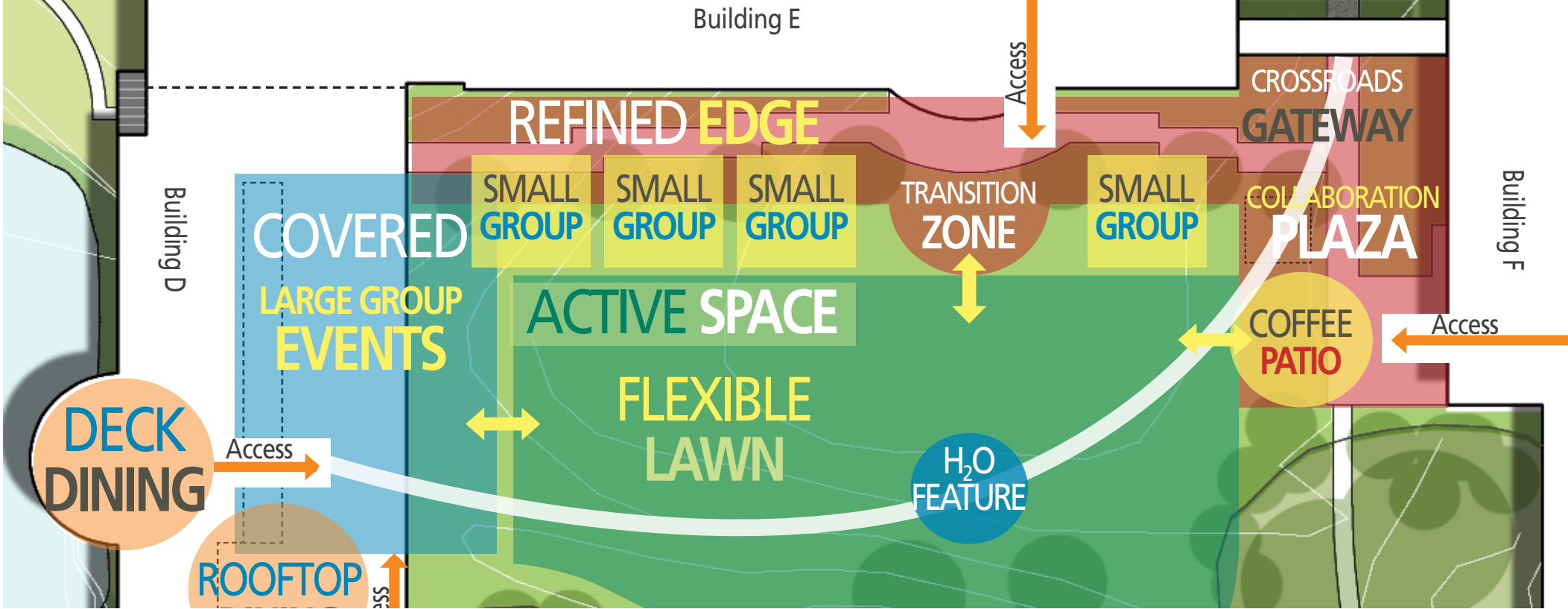
- > The building and parking facilities orientation created a series of enclosed courtyards and outdoor rooms with direct links to their interior functions.
- > Trails connect the entry plaza with newly expanded walking paths to improve connectivity and promote health and wellness.
- > The south courtyard consists of large paved plaza with outdoor seating, shade trees, a linear water feature, and open grass areas taking full advantage of the southern exposure.
- > The east courtyard is a private outdoor room for breakout meetings and small gatherings. The dining courtyard creates a garden room between the East and West building cafeterias, providing seating and shade amidst a bosque of birch trees.
- > The resulting landscape provides a stimulating view from the corporate offices above.

PROJECT FACTS

- + Location: Minnetonka, MN
- + Size: 30 acres
- + Completed: 2012

REFERENCE

Dave Pelner
Sr. Director, Workplace Development
Real Estate Services
UnitedHealth Group
952-936-1659
dave_pelner@uhg.com



Ecolab

Research and Development Campus

Damon Farber worked closely with Ecolab to develop a campus framework plan to exploit the hidden qualities of the site without erasing vestiges of history.

- > The plan studied campus entries, vehicular circulation, parking, building entries, landscape, and preservation of native landscapes.
- > Sustainable strategies were evaluated for implementation on campus to promote stewardship of natural resources and protect the environment.
- > Building entries were studied in detail, and plans were developed to enhance the arrival experience and brand the site.
- > Campus trails were evaluated and studied for expansion opportunities to offer workers an immersive experience in the landscape.
- > Programming of key exterior spaces studied flexibility and collaboration enhancement opportunities.

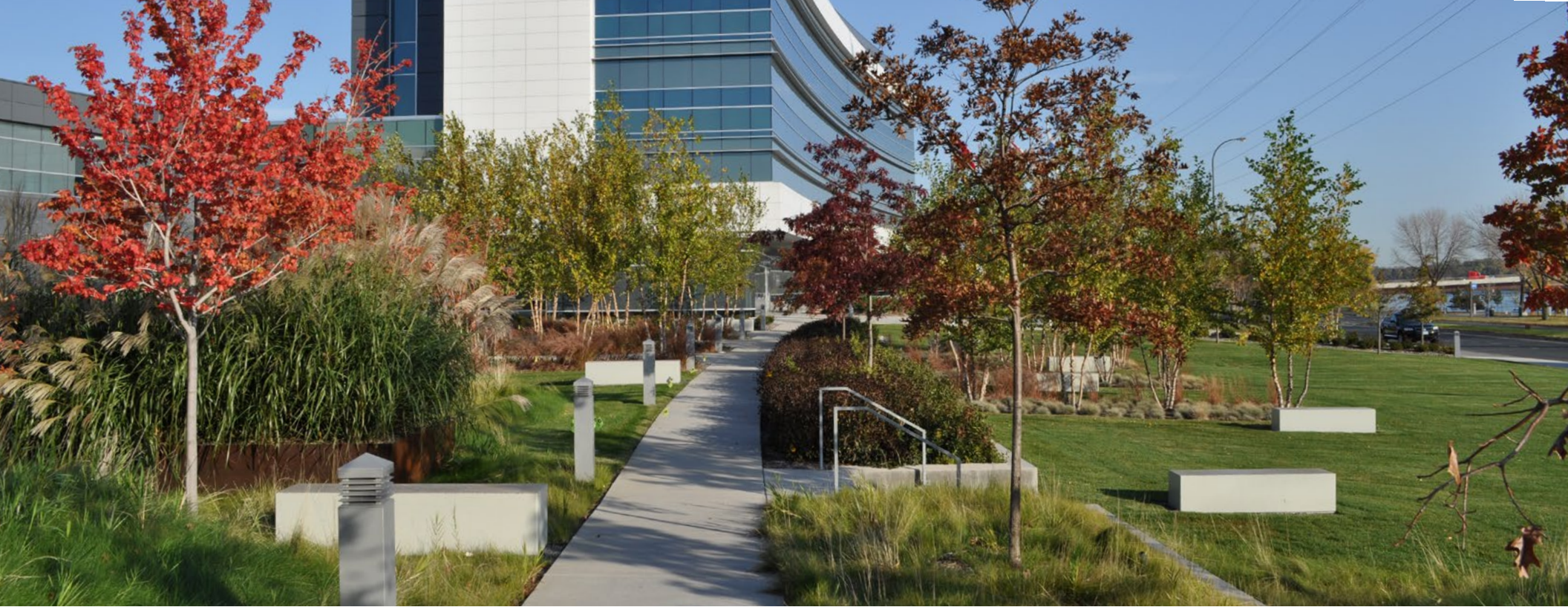
PROJECT FACTS

- + Location: Eagan, MN
- + Size: 90 acres
- + Completed Planning: 2013

REFERENCE

Dale Alexander, Senior Project Manager
Ecolab
Dale.Alexander@ecolab.com
651-795-5181





Coloplast North American Headquarters

The site and landscape plans for the Coloplast U.S. Headquarters, located on West River Parkway in north Minneapolis, were yet another opportunity for Damon Farber Associates to be part of a project seeking LEED Silver Certification. The new building features a simple, modern aesthetic which incorporates the use of stone, concrete, and metal.

- > Elements of the building design aesthetic were pulled into the landscape through the use of concrete walls and benches as well as heavy trap rock. Dark gray bands of concrete emphasize significant entry and gathering spaces.
- > The most significant element in the landscape is a large, undulating swath of native fescue grass that meanders into the site's central courtyard space. A striking corten steel planter bisects a portion of this native grass area and provides a dynamic focal point for views from ground level as well as from upper floors of the building.
- > The landscape at Coloplast provides both complementing and contrasting elements to the architecture, the result of which is a beautiful addition to the City of Minneapolis.



PROJECT FACTS

- + Location: Minneapolis, MN
- + Completed: 2010

AWARDS

- + LEED Silver Certification



Target Corporation

North Campus Buildings E & F

Target Corporation expanded their Brooklyn Park Minnesota corporate campus. The project includes new office towers, renovation of the existing buildings, and expanded parking. Target felt strongly that the campus environment must support the recruitment of the best and brightest people. Senior leadership believes a great campus will help retain employees into the future.

- > Plans envisioned a campus that provides an important first impression for visitors and team members, while blending the natural character of the existing campus with a clean, crisp modern aesthetic.
- > A new vehicular arrival court provides a strong sense of entry and a welcoming space to the campus. An entry courtyard for pedestrians provides a foreground and link to future expansion across the street.
- > The interior courtyard will enhance the existing water feature and provide a new dining patio, woodland garden, meeting spaces, bocce ball courts and a grand lawn that provides flexible space for recreation and large events.
- > The plan provides the Corporation with an important recruitment and retention tool that supports their position as one of the strongest retail companies in the world.

PROJECT FACTS

- + Location: Brooklyn Park, MN
- + Size: 115 acres
- + Budget: \$2 Million
- + Completed: 2014

REFERENCE

Rich Varda, Director of Architecture
Target Corporation
Phone: 612.761.7214





Target Corporation Financial Services Courtyard

Target Corporation purchased an existing building situated west of the downtown Minneapolis for their Financial Services Division.

- > The mature grounds included wonderful views to the downtown skyline and an existing outdoor patio area.
- > The outdated furnishings and limited landscape did not compliment the newly renovated and adjoining cafeteria/café or Targets vision for providing employee amenities that are consistent with the Target Branding.
- > Surrounded by new perennial gardens a palette of sustainable and visually appealing plant materials creates continual seasonal interest, and a selection of planters and site furnishings provides ample details and places for comfortable seating.
- > Employees can enjoy the patio or during colder months can enjoy the details observed from the adjoining café.
- > A wire curvilinear fence provides building security and emergency egress while define an outdoor room that accommodates gatherings on the large lawn. A border of evergreens and perennials visually connects the new garden to the mature park setting.

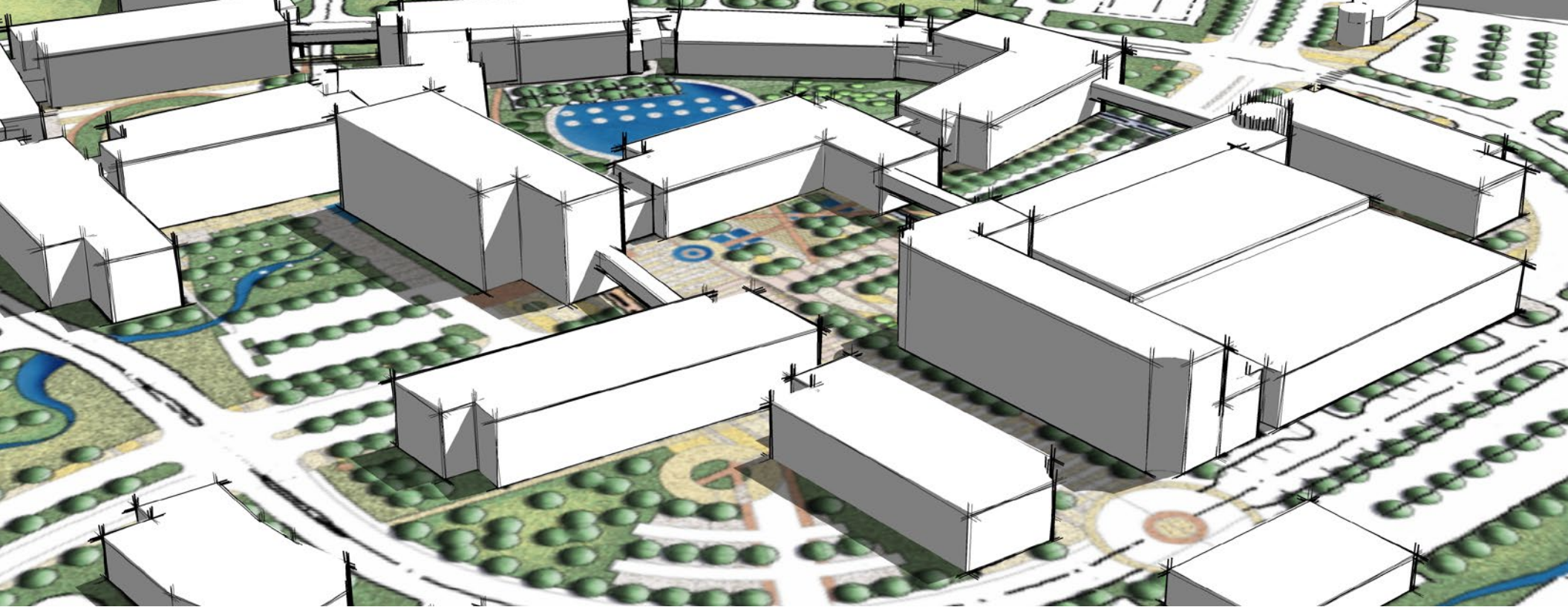
PROJECT FACTS

- + Location: Minneapolis, MN
- + Completed: 2012

REFERENCE

Amy Kuelz
Project Manager
Target Corporation
Amy.Kuelz@target.com





Target Corporation Northern Campus Master Plan

A collaboration with the Target real estate and properties development group and a team of architects to generate a site master plan to reflect a significant expansion of its current Northern Campus.

- > The corporation's vision of a contemporary campus set within a suburban context emphasizes a new urbanism scheme that incorporates the best management practices and creates a variety of environments in which to work, play, live and shop.
- > The open space system is organized around a series of bold outdoor gardens and civic spaces that focus upon the creation of a sense of place with a strong pedestrian scale.
- > More village center than traditional corporate headquarters, this plan reflects a scheme in which the business environment meets the public main street.
- > Hardscape, streetscape and landscape come together to reflect the Target commitment to quality.

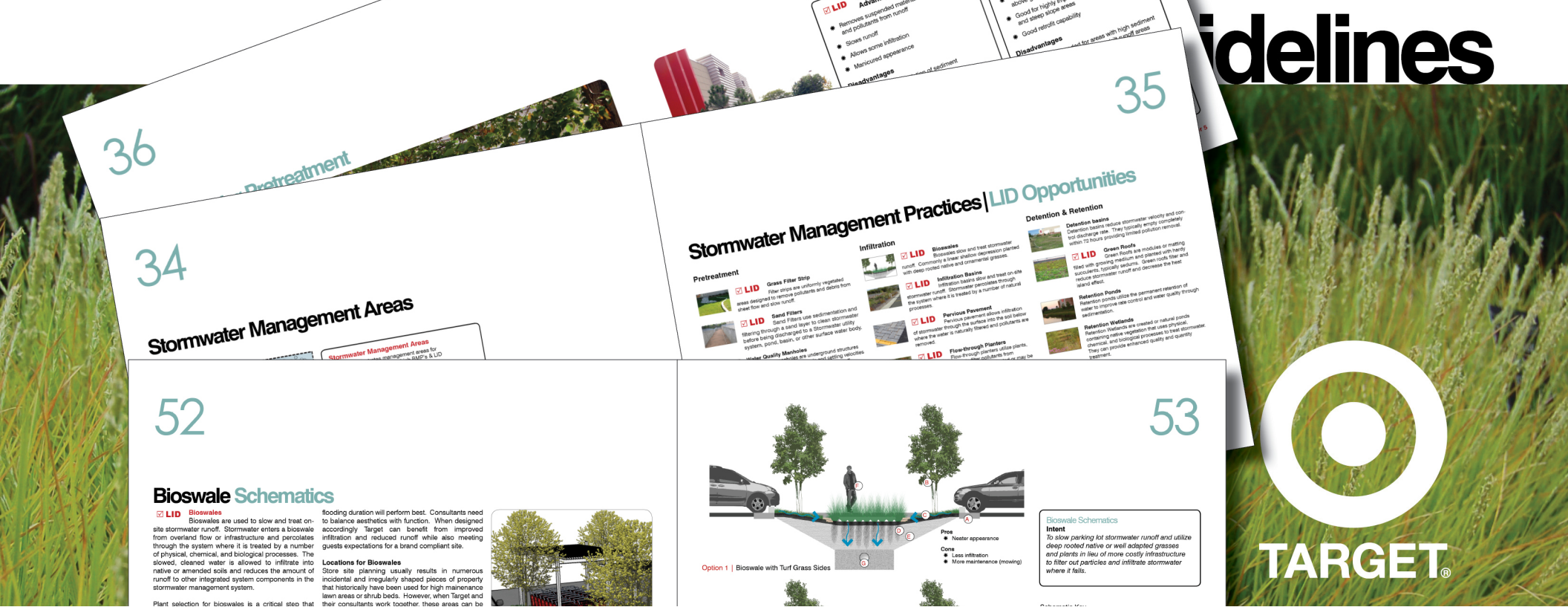
PROJECT FACTS

- + Location: Brooklyn Park, MN
- + Size: 380 acres
- + Completed: Ongoing

REFERENCE

Rich Varda, Director of Architecture
Target Corporation
Phone: 612.761.7214





Target Corporation Site Design Guidelines

Damon Farber Associates worked closely with the Target Corporation to produce a comprehensive set of Site Design Guidelines for application to new and existing Target stores nationwide.

- > The guidelines major goal is to facilitate a collaborative effort that will bring together various departments within the Target Corporation, and outside consultants to comprehensively address all factors relating to a Target site.
- > This collaborative approach will lead to improved site planning, civil engineering and landscape architectural designs that greatly improve the guest experience and site appearance of Target stores, and reduce future maintenance costs.
- > The guidelines strive to improve consistency amongst stores.
- > When properly implemented the new guidelines will dramatically increase the branding presence of all Target store exteriors. Furthermore the guidelines intend to reduce the amount of 'custom' design on store exteriors saving significant time and money.

PROJECT FACTS

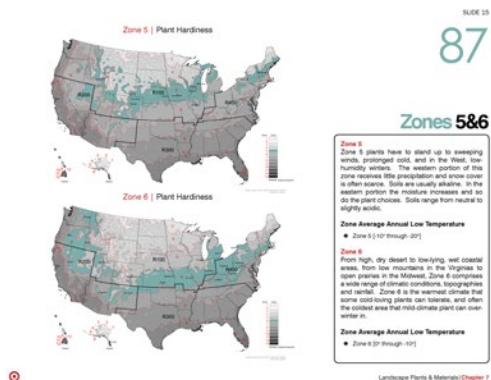
- + Location: Nationwide
- + Completed: 2008

AWARDS

- + ASLA MN Merit Award

REFERENCE

Rich Varda, Senior Vice President
Target Corporation
Phone: (612) 304-6073





Amherst H. Wilder Foundation Headquarters Landscape



The Amherst H. Wilder Foundation is a nonprofit health and human services organization that has served the greater Saint Paul, Minnesota, area since 1906. They operate dozens of programs that help children succeed in school, older adults remain independent, troubled youth create healthy futures, and individuals and families maintain long-term housing. The four-story, 99,953 square-foot Wilder Center, located in Saint Paul, is a vibrant, community campus.

- > Wilder Center features a welcoming campus focused on accessibility, sustainability, and community engagement.
- > The vision for the new Wilder Center emerged as the result of intensive planning and analysis of Wilder services and the community's changing needs.
- > Wilder Center is setting new standards of sustainability for all human service organizations. With innovative strategies for sustainability, including water savings, energy efficiency, and improved indoor environmental quality,

PROJECT FACTS

- + Location: St. Paul, MN
- + Size: 3.3 acres
- + Budget: \$37.6 Million Overall
- + Completed: 2007

AWARDS

- + LEED Gold Certification



Margaret A. Cargill Philanthropies Landscape Renovation and Planning

After a 2009 renovation of site and building at an Eden Prairie location, the Margaret A. Cargill Philanthropies (MACP) began work to triple their workforce. Damon Farber Associates continued a previous relationship with the MACP and developed a master site plan which included expansion of the original site.

- > Overall theme for the site continues to be sustainability- a goal of the original building and landscape design
- > As in the first phase of design, no turf grass is used in the site and captured rainwater is the only source for irrigation. Stormwater treatment methods utilize pervious paving, rain gardens and subsurface cisterns.
- > Plantings on the site are native or adapted and planting design was focused on restoring pollinator habitat where none existing in the last 50 years.
- > Expanding on the first phase installation of an orchard, food production and access to locally sourced food is demonstrated with growing gardens on the roof and plans for a neighborhood CSA hub.
- > To further MACP's committed to sustainability and education, creative signage is placed throughout the site to share the story of the remarkable site transformation happening as the native plantings mature.

PROJECT FACTS

- + Location: Eden Prairie, MN
- + Completed: 2009, 2016

REFERENCE

Shawn Kinnery
Facilities Manager,
Margaret A Cargill Philanthropies
SKinniry@MACPhil.org



TURFGRASS COMPARISON SUSTAINABLE FEATURES

Species	Availability	Season	Drought Tolerance	Mowing	Water Requirements	Fertilizer	Dormancy	Disease Susceptibility	Notes
Buffalograss	Sod, Seeds	Warm	↑	↓	↓	↓ NR	Winter in Northern climates	↓	
Bella Bluegrass	Sod, Plugs	Cool	↑	↓ No-Mow available	↓	↓	Short dormancy during winter in Northern climates	↓	Grows to a maximum height of 4"
Tall Fescue	Sod (as mixes only), Seed	Cool	↑	↻	↓	↓ NR	Drought	↓	
Fine Fescue	Seed	Cool	↑	↻ No-Mow available	↓ NR	↓ NR	High heat	↻	
Centipede Grass	Sod, Plugs, Seed	Warm	↻	↓	↓	↓	No true dormant state	↻	
Bahiagrass	Sod, Seed	Warm	↑	↻	↻	↓	Frost, Drought	↓	Known to be invasive
Zoysia Grass	Plugs	Warm	↻	↻	↓ NR	↓ NR	Winter in Northern climates	↻	

Life Time Fitness

Landscape Design Guidelines



Life Time seeks to develop properties that align with their brand image. Damon Farber Associates developed a set of Landscape Design Guidelines to express the landscape and site design expectations to their design consultants across the country. The guidelines will be shared with design consultants at the beginning of the design process for a new development.

- The goal is for current and prospective member's to identify with Life Time properties and perceive a "Spa-Like" atmosphere.
- Clear direction, design alternatives, and sustainable approaches regarding site design are provided.
- The guide document will be used by developers, civil engineers, landscape architects and related design and construction professionals as future development occurs, and by Life Time to evaluate development proposals and designs during the review process.

PROJECT FACTS

- + Location: Nationwide
- + Completed: 2012

AWARDS

- + ASLA MN Merit Award

REFERENCE

Matt Brinza, Senior Director Architecture
Life Time
952.229.7539
mbrinza@lifetimfitness.com



3M Corporation Community Plaza

The Community Plaza at 3M Center transformed the top of this highly visible parking ramp into a striking year-round plaza. Designed by Japanese Architect Atelier Hitoshi Abe, Damon Farber provided local design support for the plaza landscape.

- > The space is surrounded on all four sides forming a quad that is visible from hundreds of offices and the newly transformed Ring Passage that provides internal connectivity among the four buildings.
- > The plaza accommodates large events during the warmer months and provides a striking evergreen dominated landscape throughout the winter. The formally sheared hedges subdivide the plaza into smaller themed garden areas for collaboration, respite, and outdoor dining.



PROJECT FACTS

- + Location: 3M Center, Saint Paul, MN
- + Size: 2 acres
- + Completed: 2013
- + Budget: \$2,000,000

REFERENCE

Roger F Spinner | Principal Project Engineer
3M Facilities Engineering
651.737.2981
rfspinner@mmm.com

Tom Whitlock, PLA, ASLA

Principal Landscape Architect



Tom Whitlock is President of Damon Farber, and has over twenty years of extensive experience working collaboratively with public and private clients on award winning projects across the Midwest. As principal-

in-charge, he is responsible for ensuring that the firms design work exceeds the expectation of all project stakeholders. Tom has earned a strong reputation as a valuable leader and an effective collaborator.

Tom is leading Damon Farber by honoring the design forward and client centered service that has made it a top landscape architecture and site planning firm in the Midwest. He has been an integral part of Damon Farber since 1993, and became President in the spring of 2011. Tom's work has been recognized by ASLA, AIA and ULI. A University of Minnesota alum, he remains tied to the College of Landscape Architecture and has been published in Landscape Architecture Magazine, Architecture Minnesota, Architecture Week and Fabric Architecture.

Credentials

- > Registered Landscape Architect: MN 26292
- > Minneapolis Downtown Experience Committee Chairperson
- > Minneapolis Downtown Council Board Member
- > Minneapolis Regional Chamber of Commerce Board Member
- > Urban Land Institute Member
- > AIA Allied Member
- > ASLA-MN Trustee and Past President

Education

- > BLA Landscape Architecture - University of Minnesota
- > BED Environmental Design - University of Minnesota

Awards

- > American Society of Landscape Architects Minnesota:
 - + Carlton Science Center at 3M World Headquarters, Merit Award 2017
 - + Central Park - City of Maple Grove, Merit Award 2017
 - + Hanifl Family Wild Woods Nature Based Playground - Minnesota Zoo, Merit Award 2016
 - + Nic on Fifth Residential Tower, Merit Award 2015
 - + University of Minnesota Cancer + Cardiovascular Research Building, Award of Excellence 2014
 - + Fairview/Amplatz Children's Hospital at the University of Minnesota - Minneapolis, MN, Merit Award 2014
 - + Ramsey County Roseville Library, Honor Award 2012
 - + Woodland Adventure Playground - Minnesota Zoo, Merit Award 2012
 - + Town Green Park - Maple Grove, MN, Merit Award 2011
 - + Grand Forks Greenway - Grand Forks, ND, Merit Award 2008
 - + The Town Green at Excelsior & Grand - St. Louis Park, MN, Merit Award 2007
- > Southern MN Scene Magazine: Vetter Stone Amphitheater in Mankato, MN, Best Place for Live Music 2013
- > Nation's 1st LEED-ND (Neighborhood Design) Excelsior & Grand, 2005

Relevant Experience

- > 3M Center, Project Community - St. Paul, MN
- > 3M Center, Framework Plan & Maintenance Guidelines - St. Paul, MN
- > ADC BCG Facility - Shakopee, MN
- > Boston Scientific - Maple Grove, MN
- > Cargill Corporate Headquarters Master Plan - Minnetonka, MN
- > Coloplast American Headquarters - Minneapolis, MN
- > Ecolab Headquarters & Schuman Campus- St. Paul & Eagan, MN
- > Select Comfort - Plymouth, MN
- > Target North Campus Master Plan - Brooklyn Park, MN
- > Target Financial Services dining patio - Minneapolis, MN
- > United Health Group - Edina, MN
- > Wells Fargo Corporate Campus - Shoreview, MN
- > Wilder Foundation Headquarters - St. Paul, MN

Jean Garbarini, ASLA, Principal



Jean Garbarini is a registered Landscape Architect and Principal with Damon Farber Associates, a planning and design firm located in Minneapolis, Minnesota. Jean has over twenty five years of experience on a wide range of projects, including urban plazas, campus planning and design, park design, public landscapes, corporate headquarters and cultural landscapes. Jean is known for her involvement in multifaceted projects involving both contemporary and historic sites. Her work on cultural landscapes includes analysis, design and construction for public and private clients.

Her award-winning work includes a major urban park revitalization in a restored north Minneapolis neighborhood, an urban mid-century modern courtyard landscape restoration, and a new campus for a major Minnesota Corporation's local expansion.

Jean has been the lead landscape architect on dozens of LEED projects including several of which reached platinum certification, and has contributed multiple Historic American Landscapes Studies to the Library of Congress. She is a member of the Minnesota Chapter of the American Society of Landscape Architects, previously serving on its Executive Board. She remains linked to the University, where she is a guest lecturer in the College of Design.

Education

- > Bachelor of Landscape Architecture - University of Minnesota

Credentials

- > Registered Landscape Architect: MN 26234
- > Meets the National Park Service's professional qualification standard for Historic Landscape Architect
- > University of Minnesota guest lecturer

Awards

- > American Society of Landscape Architects Minnesota:
 - + Central Park - City of Maple Grove, Merit Award 2017
 - + National Home for Disabled Volunteer Soldiers: Historic American Landscapes Survey (HALS), Merit Award 2013
 - + Benedicta Arts Center Courtyard, Merit Award 2010
 - + Medtronic Cardiac Rhythm Disease Management Campus, Merit Award 2007
 - + St. Anthony Village Flood Control Project, Merit Award 2005
 - + Private Residence on Kenilworth Creek, Merit Award 2003
 - + Minneapolis Near Northside Master Plan, Award of Excellence 2003
- > Minneapolis Heritage Preservation Commission (HPC) and Preservation Alliance of Minnesota, River Towers Condominiums Courtyard Restoration, Preservation Awards 2006
- > American Council of Engineering Companies:
 - St. Anthony Village Flood Control Project, Engineering Excellence Grand Award 2005
- > American Planning Association: St. Paul North Quadrant Urban Village, Planning Award 2002

Relevant Experience

- > Margaret A Cargill Philanthropies Corporate Headquarters, Eden Prairie, MN
- > Water Works Park, Minneapolis, MN
- > Webber Library, Minneapolis, MN
- > Minneapolis Convention Center Plaza - Minneapolis, MN
- > St. Jude Medical Center - Plymouth, MN Campus
- > Upsher Smith Headquarters - Maple Grove, MN

Chuck Evens, PLA

Senior Landscape Architect



A seasoned Landscape Architect with nearly 20 years of experience; Chuck's work over his career has focused on the creation of unique, sustainable and complementary environments. A core team member at

Damon Farber since 2001, and an integral part of the firm's growth, he designs creative outdoor spaces for people. He continues to build a strong legacy of award winning designs in collaboration with clients, consultants and peers.

Chuck finds creative ways to achieve client's goals, and opportunities to optimize sites, enhance connectivity, and maintain a balanced environment. He has honed his passion for design precision, clarity of organization, and has a keen eye for complementary materials, colors, and textures. He believes the built environment adds value and improves our quality of life, and he seeks intelligent ways to create strong relationships among spaces to enhance the places we live, work and recreate.

Credentials

- > Registered Landscape Architect: MN 50575
- > AIA MN Allied Member
- > Architecture Minnesota magazine committee member
- > Saint Paul Parks & Recreation Comprehensive Plan Update Taskforce Former Member
- > Minneapolis Blend Awards Juror

Education

- > BA Environmental Design & BA Landscape Architecture - North Dakota State University
- > European Study Abroad Program

Awards

- > American Society of Landscape Architects Minnesota:
 - + Carlton Science Center at 3M World Headquarters, Merit Award 2017
 - + Central Park - City of Maple Grove, Merit Award 2017
 - + University of St Thomas Anderson Student Center, Monahan Plaza, Anderson Athletic & Recreation Complex, Fowler Veranda, and Quadrangle Renovation, Merit Award 2015
 - + University of Minnesota Cancer + Cardiovascular Research Building, Award of Excellence 2014
 - + Lifetime Fitness Landscape Design Guidelines, Merit Award 2013
 - + Target Site Design Guidelines, Merit Award 2010
 - + Market Square Park, Village at Mendota Heights, MN, Merit Award 2007

Relevant Experience

- > 3M World Headquarters - St. Paul, MN
 - + Framework Plan & Site Maintenance Guidelines
 - + Building 220 Landscape Renovation & Community Plaza
 - + Building 222 Dining Terrace
 - + Building 223 Design Center Entry Concept
 - + Building 280 Lab
 - + Lake Trail & Boardwalk
 - + Building 275 Courtyard Predesign
 - + 11th Street Visioning Plan - Private Campus Arterial Roadway
- > Boston Scientific Campus Planning - Arden Hills, MN
- > CHS Corporation Headquarters Site & Landscape Framework Plan - Inver Grove Heights, MN
- > Cargill Corporation - Corporate Rebranding
- > Ecolab Schuman Campus Landscape Framework Plan & Building H Addition - Eagan, MN
- > Life Time Fitness - National Landscape Design Guidelines
- > Select Comfort Corporate Headquarters - Plymouth, MN
- > Target - National Site Design Guidelines and Financial Services - Minneapolis, MN
- > Udonor North American Headquarters - Apple Valley, MN
- > OATI Headquarters - Bloomington, MN



DAMON FARBER LANDSCAPE ARCHITECTS