

DF/ DAMON FARBER LANDSCAPE ARCHITECTS



Urban Planning and Mixed Use Portfolio

Contact

THOMAS WHITLOCK, ASLA / PRESIDENT

612.332.7522
twhitlock@damonfarber.com
www.damonfarber.com



DAMON FARBER LANDSCAPE ARCHITECTS

Damon Farber is an award winning landscape architecture and site planning firm focused on innovative design, research, and collaboration. Our portfolio includes exceptional outdoor environments of varied scales which reflect sensitivity to the natural environment and a dedication to the needs of our clients. We are an experienced team of landscape architects who explore and understand all contributing influences on a project and develop solutions with long term viability. Our work is enriched through frequent partnerships with allied design professionals, engineers, ecologists, historians and artists.

Damon Farber's multifaceted firm strengths include inspiring design, community leadership and engagement, cultural landscapes, campus planning, extraordinary graphic abilities, disciplined materials research, and fiscal responsibility. For over 37 years, our portfolio has consistently reflected a composed clarity and strong contribution to the built environment.

FIRM FACTS

- > Established 1981
- > 37 Years In Service
- > Location: Minneapolis, MN
- > Legal Status: Minnesota S Corporation
- > Ownership: Thomas Whitlock, ASLA
- > 8 Landscape Architects-In-Training
- > 8 Landscape Architects
- > 4 LEED Accredited Professionals
- > Registered in 8 states: MN, IA, SD, ND, IL, MO, KY and PA.

SERVICES

- > Landscape Architecture
- > Site and Master Planning
- > Sustainable Design
- > Urban Design

KEY PRACTICE AREAS

- > Community
- > Corporate
- > Cultural/Historic
- > Education
- > Government
- > Healthcare
- > Housing
- > Mixed-Use
- > Parks & Recreation
- > Transportation
- > Zoo



Relevant Experience

MIXED-USE DESIGN

Dan Abraham Healthy Living Center
Rochester, MN

Excelsior & Grand
St. Louis Park, MN

Westin Galleria Hotel
Edina, MN

The Lagoon
Uptown/Minneapolis, MN

Target North Campus
Brooklyn Park, MN

Nic on 5th
Minneapolis, MN

The Shoppes at Arbor Lakes
Maple Grove, MN

Milwaukee Road Depot
Minneapolis, MN

Canal Park Drive
Duluth, MN

The Carlyle
Minneapolis, MN

The Fountains Lifestyle Center
Maple Grove, MN

Woodbury Lakes Lifestyle Center
Woodbury, MN

The Village at Mendota Heights
Mendota Heights, MN

WORKPLACE DESIGN

Fortune 500 Company
St. Paul, MN

Fortune 500 Company Laboratory Bldg
St. Paul, MN

Fortune 500 Company Community Plaza
St. Paul, MN

Ameriprise Financial
Minneapolis, MN

American Express Winter Garden
Minneapolis, MN

Cargill Corporation
Multiple Locations

Coloplast North American Headquarters
Minneapolis, MN

Ecolab World Headquarters
Saint Paul, MN

Margaret A. Cargill Philanthropies
Minnetonka, MN

Target Northern Campus
Brooklyn Park, MN

United Health Group Headquarters
Minneapolis, MN

University of Minnesota
Cancer and Cardiovascular Research Building

Wilder Foundation Headquarters
St. Paul, Minnesota

URBAN PARK DESIGN

Central Park
Maple Grove, MN

Gateway Park
Minneapolis, MN

The Commons
Minneapolis, MN

Town Green
Maple Grove, MN

Waterworks Park Phase 1
Minneapolis, MN

PUBLIC REALM DESIGN

Biomedical Discovery District
University of Minnesota

Minneapolis Downtown Improvement District
Minneapolis, MN

Minneapolis Convention Center Plaza
Minneapolis, MN

City Square and Washington Street
Wausau, WI

Front Street Streetscape Renovation
Mankato, MN

University of Minnesota
Pleasant Street

University of Minnesota
Northrop Plaza



The Commons Minneapolis, Minnesota

Damon Farber worked closely with Hargreaves Associates, project stakeholders, and a specialized design team on the redevelopment of 4.2 acres of downtown public realm adjacent to the new one billion dollar US Bank Stadium in the heart of the East Town District of Minneapolis.

- > This new multi-million dollar public park accommodates large-scale events, and provides respite and everyday activities for the downtown community, residents, workers and visitors.
- > Our role as a design partner with the City of Minneapolis and other consultants included landscape architectural services related to planting, paving, and lighting design, tree preservation, work around existing features, and significant on-site construction administration.
- > Surrounding context, public input, professional experience and site opportunities and constraints were drivers for the design's evolution.
- > A collaborative community engagement process sought public feedback throughout the design.
- > An online survey received nearly 2,500 responses about desired activities and amenities at the park.

PROJECT FACTS

- + Size: 4.2 acres
- + Completed: Fall 2017
- + Budget: \$10,500,000+

REFERENCE

Miles Mercer
City of Minneapolis
Miles.Mercer@minneapolismn.gov

Beth Shogren
Executive Director - Green Minneapolis
Phone: 612.961.7663
bshogren@greenminneapolis.org





Dan Abraham Healthy Living Center Expansion Mayo Clinic



Mayo Clinic gives fresh form to its Healthy Living Program that welcomes guests into a world of natural, warm, and inspiring support built on a foundation of medical and health care research linking healthy behaviors to long-term well-being. Expanding upon the existing Dan Abraham Healthy Living Center designed by the same architectural team, the four-story Healthy Living Program achieves a higher level of wellness through a balance of care, fitness, nutrition, and natural and spiritual awareness, all in the heart of a city's urban core.

- Collaboration throughout the design process delivered an inspiring indoor/outdoor rooftop garden, and indoors a 60 foot long living wall provides vibrant color, vitality and clean air.
- Outside the glass, guests are treated to rooftop terrace with dramatic views of the surrounding downtown. Mayo Clinic invites guests on a personal journey of confidence, inspiration, and beauty that is reflective of Mayo and deserving of the patient's multi-day, personal investment.
- A mix of natural elegance, rich materials, and radiant natural light greets guests in the lobby and begins the transcendent journey to long-lasting wellness. The design choices create an immersive environment for health that is seamless both in its transitions between spaces and in Mayo Clinic's integrated health care offerings.

PROJECT FACTS

- + Location: Rochester, MN
- + Budget: Unspecified
- + Size: 760,000 sq ft
- + Completed: 2014

REFERENCE

Steven C. Grosland, Facilities Project Services, Mayo Clinic Rochester



Cancer + Cardiovascular and Research Building (CCRB) Green Roof University of Minnesota



To improve both the working environment and sustainability for the Cancer + Cardiovascular and Research Building (CCRB), part of University of Minnesota's Academic Health Center and Biomedical Discovery District (BDD), the design team created an extensive green roof over the building that links the CCRB to the The University of Minnesota Center Of Immunology.

- > The outdoor deck connects staff and researchers from several buildings onto a collaborative outdoor space.
- > The green roof plan mimics the main building entrance's distinct egg shape and arching patterns
- > Simple and elegantly detailed elements of planting, walls and furnishings create a distinctive place to gather
- > The intensive green roof provides stormwater benefits

PROJECT FACTS

- + Location: University of Minnesota, Twin Cities Campus
- + Budget: \$292 M / \$6.7 M site
- + Size: 8 acres
- + Completed: 2013
- + MN B3 Sustainable Building Guidelines

AWARDS

- + ASLA-MN Award of Excellence
- + Cast Stone Institute Award of Excellence

REFERENCE

Monique MacKenzie, Director of Planning
University of Minnesota Capital Planning
Phone: 612.624-3565
E-mail: moniquem@umn.edu



Dan Abraham Healthy Living Center Mayo Clinic



In 2005, via a generous gift by Dan Abraham, founder of Slim-fast, Mayo embraced a project that would serve as an employee and patient wellness center.

- > The inter connectivity to the rest of the campus via underground pedestrian ways drove the planning that would define the project's organization vertically.
- > To further connect the project to its context, a large landscaped sunken courtyard anchors the lower level. From there, the users move vertically to the street level and then onto the upper levels.
- > Large openings throughout the floors allow for views up and through the upper levels. This strategy connects the café up to the running track on the 4th level, where employees enjoy a state of the art facility for fitness and wellness.

PROJECT FACTS

- + Location: Rochester, MN
- + Budget: \$50 Million Dollars
- + Size: 1 acre, 220,000 sq ft
- + Completed: 2007 & 2014

REFERENCE

Steven C. Grosland, Facilities Project Services, Mayo Clinic Rochester



Cancer + Cardiovascular Research Building University of Minnesota



The University of Minnesota's Academic Health Center developed a vision for a new Biomedical Discovery District, (BDD) and secured funding for a \$292 million investment. The centerpiece of the District is the new Cancer + Cardiovascular Research Buildings. The front door and lobby space are setback to embrace a fore court plaza. The plaza has a distinct egg shaped green space that provides separation from the street and forms two smaller more intimate gathering spaces adjacent to a public café.

- > Simple and elegantly detailed elements, walls, lighting and furnishings create a distinctive sense of welcome, gathering for dining, events, or just sitting and is now the signature place of identity for the District.
- > Rain gardens, infiltration basins, porous paving and intensive green roof provides stormwater benefits and includes an outdoor deck connects staff and researchers from several buildings onto a collaborative outdoor room.

PROJECT FACTS

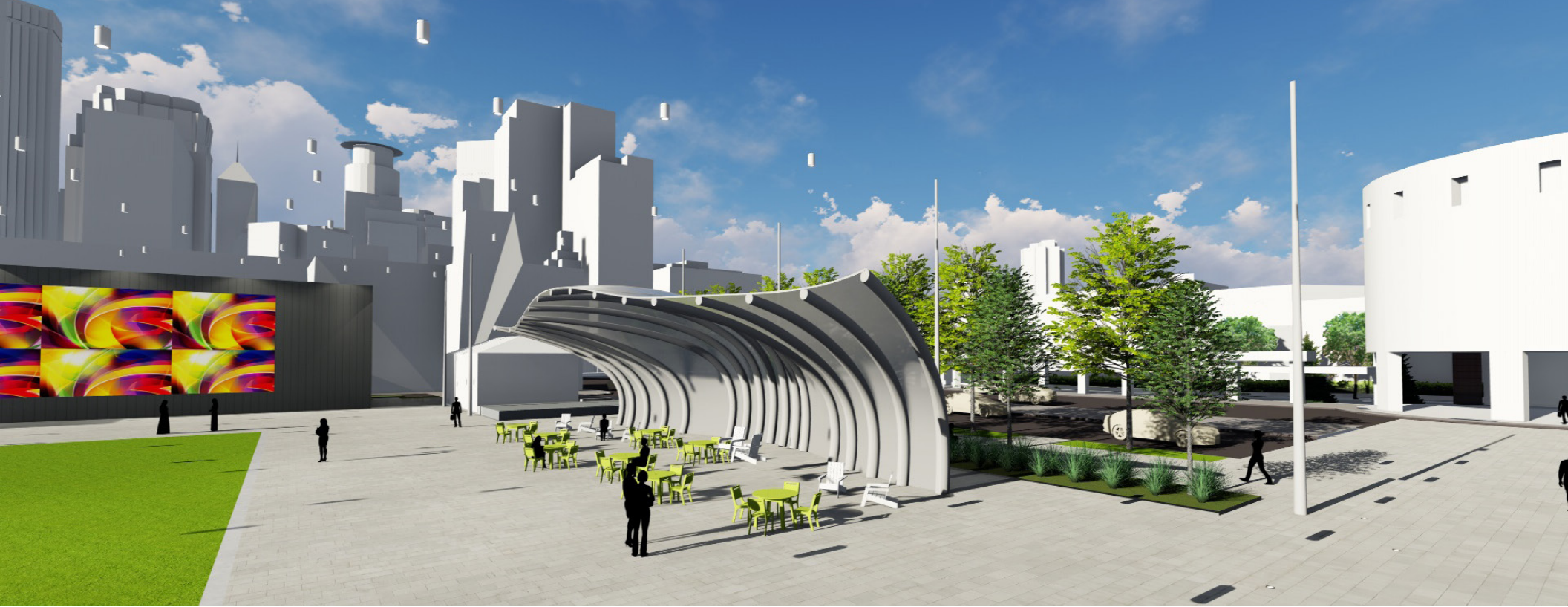
- + Location: University of Minnesota, Twin Cities Campus
- + Budget: \$292 M / \$6.7 M site
- + Size: 8 acres (overall)
- + Completed: 2013
- + MN B3 Sustainable Building Guidelines

AWARDS

- + ASLA-MN Award of Excellence
- + Cast Stone Institute Award of Excellence

REFERENCE

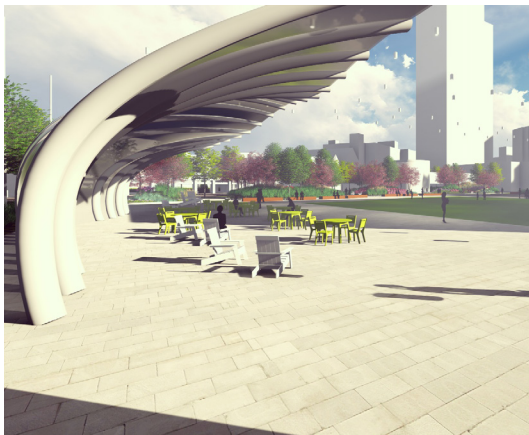
Monique MacKenzie, Director of Planning
University of Minnesota Capital Planning
Phone: 612.624-3565
E-mail: moriquem@umn.edu



Minneapolis Convention Center Plaza Renovation City of Minneapolis

The Minneapolis Convention Center Plaza is an important green space that serves as a launching point for visitors entering downtown Minneapolis as well as important flex space for the convention center to provide its users. The new plaza provides a large gathering area to accommodate crowds over 4,500 people and still feel comfortable for a person to take his/her lunch and find a quiet space to relax, enjoy the skyline and connect with nature.

- > An 80' long composite shade structure named: 'The Falls'
- > A 40,000 sq ft Flexible lawn space with overhead catenary lighting
- > Rotating Public Art Exhibit
- > Incorporation of Historic Artifacts in Garden Rooms
- > Video Screen Wall



PROJECT FACTS

- + Location: Minneapolis, MN
- + Completed: 2019
- + Size: 4 acres
- + Budget: TBD

REFERENCE

Jeff Johnson, Executive Director
Minneapolis Convention Center
Phone: 612.335.6000



Target Corporation North Campus Buildings E & F



Target Corporation expanded their Brooklyn Park Minnesota corporate campus. The project includes new office towers, renovation of the existing buildings, and expanded parking. Target felt strongly that the campus environment must support the recruitment of the best and brightest people. Senior leadership believes a great campus will help retain employees into the future.

- > Plans envisioned a campus that provides an important first impression for visitors and team members, while blending the natural character of the existing campus with a clean, crisp modern aesthetic.
- > A new vehicular arrival court provides a strong sense of entry and a welcoming space to the campus. An entry courtyard for pedestrians provides a foreground and link to future expansion across the street.
- > The interior courtyard will enhance the existing water feature and provide a new dining patio, woodland garden, meeting spaces, bocce ball courts and a grand lawn that provides flexible space for recreation and large events.
- > The plan provides the Corporation with an important recruitment and retention tool that supports their position as one of the strongest retail companies in the world.

PROJECT FACTS

- + Location: Brooklyn Park, MN
- + Size: 115 acres
- + Budget: \$2 Million
- + Completed: 2014

REFERENCE

Rich Varda, Director of Architecture
Target Corporation
Phone: 612.761.7214



Nic on 5th

Opus Development

Damon Farber worked with Opus Development on the design of a ninety million dollar mixed-use development in the heart of downtown Minneapolis. The 27 story tower includes 253 luxury-apartments, and the first two floors have nearly 25,000 square feet of retail space that includes a fine-dining restaurant with outdoor seating fronting Nicollet Mall.

The site, which is named after the former Powers Department Store, is on the half-block that faces the light rail transit station between Marquette Avenue and Nicollet Mall. The building is connected via the skyway to Fifth Street Towers across Marquette Avenue and to the Neiman Marcus retail store across South Fifth Street. The outdoor roof terrace includes a pool and spa, outdoor fire pit, dog play area, bar and kitchen gazebo.



PROJECT FACTS

- + Location: Minneapolis, MN
- + Completed: 201_
- + Size: ____
- + Budget: ____

REFERENCE

—



3M Corporation Carillon Science Center



This collaboration was an opportunity to deliver an innovative and complementary landscape for a new state of the art research and development building. The building's primary focus is to maintain the company's vitality of innovation and technology, and houses over 700 researchers and scientists.

- > Developed integrated site circulation between vehicles, service trucks, specialty buses, pedestrians and bicycles that optimized safety by clear delineation of pavements.
- > 580 car parking lot is sub-divided into 4 smaller segments by long linear medians that are each flanked by pedestrian sidewalks and filled with abundant shade trees, and native plants providing an enhanced experience for employees and visitors as they progress from parking to entry plaza.
- > Expansive entry plaza has integrated linear layers of specialty paving, concrete unit pavers, custom site furnishings, plantings and lighting which harmoniously break down the scale of the space, relate to the building, and create a comfortable and complementary foreground to Lab 280.
- > Custom over-sized site furniture was designed in order to address the massive scale of the building and complement the palette of materials.

PROJECT FACTS

- + Location: 3M Center, Saint Paul, MN
- + Size: 18 acres
- + Completed: Fall 2015
- + Budget: \$1,250,000

AWARDS

- + USGBC LEED Silver Certification

REFERENCE

Roger F Spinner | Principal Project Engineer
3M Facilities Engineering
651.737.2981
rspinner@mmm.com



400 Block Wausau, Wisconsin



The 400 Block in downtown Wausau was completed in 2011 to include a permanent stage and sound system, seating and landscaping, and a lighted fountain. This centerpiece of the downtown offers a great new gathering space for activities, picnics or lunch, and hosts weekly concerts and other events throughout the year.

- > Hosts many events including Marketplace Thursdays, with food, seasonal produce and other assorted items for purchase.
- > "Screen on the Green", a movie under the stars: leave the electronics at home, and instead bring your lawn chairs and blankets and take in the summer air and a movie.
- > Kids love "Chalkfest" when every summer artists and their colorful pastel art drawings transform downtown Wausau's 400 Block into a visual museum. Chalkfest is for artists of all ages and levels of ability to participate and for art enthusiasts to observe and enjoy.
- > Winter it is home to an outdoor skating rink.

PROJECT FACTS

- + Completed: 2011
- + Size: 6 Acres
- + Website: wausauvents.org



Front Street Streetscape Renovation City of Mankato and City Center Partnership

The City of Mankato has seen significant growth of civic, hospitality and office uses within the downtown core. Many of the projects have been completed without acknowledging the larger contextual connectivity issues. Historic Front Street, the main spine leading through the downtown area, is dotted with a number of vacant buildings that have created a disjointed experience for visitors and workers alike.

- > Plan was developed to improve way finding, extend the successful public art program, incorporate public transit and improve the overall brand of the City Center
- > Collaborated with local architects, stakeholders, city officials and developers to craft a plan that leveraged proposed projects to enhance the public realm, improve way finding, attract private investment and reinforce downtown Mankato as a 24/7 destination.

PROJECT FACTS

- Location: Mankato, MN
- Completed: 2012
- Size: 12 city blocks

REFERENCE

Patrick Hentges, City Manager
City of Mankato
phentges@mankatomn.gov
507.387.8695

Eric Harriman, Former Director
City Center Partnership
507.412.1895





Central Park Maple Grove, Minnesota



This reclaimed 40-acre mining site has become a signature community park in the heart of Maple Grove after 30 years in the comprehensive plan. The park provides open space, multi-seasonal recreation options, shelters, and playgrounds for the growing community.

- > Recreational opportunities include pickleball, basketball, tennis, ice skating, playground, walking & biking trails
- > Formal garden and lawn with raised covered stage for events and weddings
- > A central lawn provides flexible open space for passive and active recreation and is flanked by a bioswale that will treat and infiltrate stormwater and irrigation runoff
- > Park building offers space for community events, provides restrooms, and a warm space for the winter skating loop
- > Splash pad offers relief from summer heat and affords children an interactive experience with water play
- > Playground includes vibrant and cleverly designed play elements with zones for various aged children, a hillside slide zone, sand play zone, tower zone, swing zone, and a rock climbing wall

PROJECT FACTS

- Completed: 2015
- Size: 40 acres
- Budget: \$13,000,000 (PH1)

REFERENCE

Chuck Stither, Project Manager
City of Maple Grove, Minnesota
763-494-6503
cstither@ci.maple-grove.mn.us



Town Green & Bandshell Maple Grove, Minnesota

Damon Farber led the consultant team for a new town green park and performance venue located in the heart of a growing suburban city, transforming what was once a surface gravel mine into a thriving community hub.

- > The Park offers users a variety of trails for biking and walking, plenty of lawn for passive and active play, and many opportunities to sit and enjoy the setting.
- > The Bandshell features seasonal entertainment, and the pavilion buildings offer meeting space for the community in a unique setting fully immersed in the park.
- > The project is situated on a lake that reflects summer sunsets and fireworks show put on each summer by the local fire department.
- > Featured on the cover of *Architecture Minnesota*

PROJECT FACTS

- + Completed: 2011
- + Size: 12.6 acres
- + Budget: \$5,500,000

AWARDS

- + ASLA-MN Merit Award

REFERENCE

Chuck Stifter, Project Manager
City of Maple Grove
763-494-6503
cstifter@ci.maple-grove.mn.us





Gateway Park Minneapolis, Minnesota

Design is but a small fraction of what goes into making a great space. Everyone wants a place. A resident wants a place to escape and play, an office worker a place to eat a sandwich and read a book and a tourist a place of cultural interest. The Master Plan for Gateway Park in Minneapolis fulfills the City's need to have a place of our own and is a key component of the 2025 Plan.

To find our place, we must first understand their desires. By examining the diverse desires of the local resident, the office worker and the tourist – the space's principal users – it becomes apparent both what is specific to their needs and what overlaps with others.

- Tourists want to watch a large and exciting events, which requires a large open space, playground for their children and a café to sit in
- Local residents additionally want a soft green space for escape.
- Office workers want respite in a green space as well as wonderful views
- They all share common desires for, a place for the cold winter months, a safe place for games, a place of delight and surprise.

PROJECT FACTS

- + Completed: Planning
- + Est. Budget: \$16,000,000
- + Size: 2 Acres



Tom Whitlock, PLA, ASLA
Principal Landscape Architect



Tom Whitlock is President of Damon Farber, and has over twenty years of extensive experience working collaboratively with public and private clients on award winning projects across the Midwest. As principal-

in-charge, he is responsible for ensuring that the firms design work exceeds the expectation of all project stakeholders. Tom has earned a strong reputation as a valuable leader and an effective collaborator.

Tom is leading Damon Farber by honoring the design forward and client centered service that has made it a top landscape architecture and site planning firm in the Midwest. He has been an integral part of Damon Farber since 1993, and became President in the spring of 2011. Tom's work has been recognized by ASLA, AIA and ULI. A University of Minnesota alum, he remains tied to the College of Landscape Architecture and has been published in Landscape Architecture Magazine, Architecture Minnesota, Architecture Week and Fabric Architecture.

Credentials

- > Registered Landscape Architect: MN 26292
- > Minneapolis Downtown Experience Committee Chairperson
- > Minneapolis Downtown Council Board Member
- > Minneapolis Regional Chamber of Commerce Board Member
- > Urban Land Institute Member
- > AIA Allied Member
- > ASLA-MN Trustee and Past President

Education

- > BLA Landscape Architecture - University of Minnesota
- > BED Environmental Design - University of Minnesota

Awards

- > American Society of Landscape Architects Minnesota:
 - + Carlton Science Center at 3M World Headquarters, Merit Award 2017
 - + Central Park - City of Maple Grove, Merit Award 2017
 - + Hanifl Family Wild Woods Nature Based Playground - Minnesota Zoo, Merit Award 2016
 - + Nic on Fifth Residential Tower, Merit Award 2015
 - + University of Minnesota Cancer + Cardiovascular Research Building, Award of Excellence 2014
 - + Fairview/Amplatz Children's Hospital at the University of Minnesota - Minneapolis, MN, Merit Award 2014
 - + Ramsey County Roseville Library, Honor Award 2012
 - + Woodland Adventure Playground - Minnesota Zoo, Merit Award 2012
 - + Town Green Park - Maple Grove, MN, Merit Award 2011
 - + Grand Forks Greenway - Grand Forks, ND, Merit Award 2008
 - + The Town Green at Excelsior & Grand - St. Louis Park, MN, Merit Award 2007
- > Southern MN Scene Magazine: Vetter Stone Amphitheater in Mankato, MN, Best Place for Live Music 2013
- > Nation's 1st LEED-ND (Neighborhood Design) Excelsior & Grand, 2005

Relevant Experience

- > Dan Abraham Center - Mayo Clinic, Rochester, MN
- > University of Minnesota
 - + Biomedical Discovery District - Minneapolis, MN
 - + Ambulatory Care Center
 - + Cancer + Cardiovascular Research Building
- > Downtown Improvement District Master Plan - Minneapolis, MN
- > Mayo Clinic Ozmun Building - Rochester, MN
- > Park Nicollet Melrose Institute Therapeutic Garden - St. Louis Park, MN
- > Minneapolis Parklot - Minneapolis, MN
- > Gateway Park - Minneapolis, MN
- > Coloplast American Headquarters - Minneapolis, MN
- > St. Jude Medical Campus - Maple Grove, MN
- > Downtown East Commons - Minneapolis, MN

Chuck Evens, PLA
Senior Landscape Architect



Chuck's work has focused on the creation of unique, sustainable and complementary environments. A core team member at Damon Farber since 2001, and an integral part of the firm's growth, he designs creative outdoor spaces for people. He continues to build a strong legacy of award winning designs in collaboration with clients, consultants and peers.

Chuck finds creative ways to achieve client's goals, and opportunities to optimize sites, enhance connectivity, and maintain a balanced environment. He has honed his passion for design precision, clarity of organization, and has a keen eye for complementary materials, colors, and textures. He believes the built environment adds value and improves our quality of life, and he seeks intelligent ways to create strong relationships among spaces to enhance the places we live, work and recreate.

Credentials

- > Registered Landscape Architect: MN 50575
- > AIA MN Allied Member
- > Architecture Minnesota magazine committee member
- > Saint Paul Parks & Recreation Comprehensive Plan Update Taskforce Former Member
- > Minneapolis Blend Awards Juror

Education

- > BA Environmental Design & BA Landscape Architecture - North Dakota State University
- > European Study Abroad Program

Awards

- > American Society of Landscape Architects Minnesota:
 - + Carlton Science Center at 3M World Headquarters, Merit Award 2017
 - + Central Park - City of Maple Grove, Merit Award 2017
 - + University of St Thomas Anderson Student Center, Monahan Plaza, Anderson Athletic & Recreation Complex, Fowler Veranda, and Quadrangle Renovation, Merit Award 2015
 - + University of Minnesota Cancer + Cardiovascular Research Building, Award of Excellence 2014
 - + Lifetime Fitness Landscape Design Guidelines, Merit Award 2013
 - + Target Site Design Guidelines, Merit Award 2010
 - + Market Square Park, Village at Mendota Heights, MN, Merit Award 2007
- > Southern MN Scene Magazine's Best Place for Live Music: Vetter Stone Amphitheater - Mankato, MN 2013
- > Environments for Aging Award, Friendship Village Fitness Center - Bloomington, MN 2012

Relevant Experience

- > The Commons - East Town / Minneapolis Downtown Improvement District – Minneapolis, MN
- > Minneapolis Downtown Improvement District Master Greening Plan
- > 6th Street SE Streetscape- Biomedical Discovery District, University of Minnesota - Minneapolis, MN
- > The Village at Mendota Heights Mixed Use Development
- > 11th Street Redesign Concepts - 3M Center, St. Paul, MN
- > Schofield Avenue Streetscape - Schofield, WI
- > Marshall / Main Street Master Plan - Minneapolis, MN

Bob Close, FASLA, Park Planner



Over his 36 year career, Bob Close has worked across the spectrum of the landscape architectural profession from large scale planning projects to urban design and community-based projects, to detailed

site design for a wide range and scale of projects. In addition, Bob has worked closely with many local communities as they have dealt with issues of smart growth and livability.

He has taught graduate studios in urban design and site design at the nationally-recognized design program at the University of Minnesota. Bob is a native of the Twin Cities and has established enduring relationships with both Minneapolis and Saint Paul as a result of his commitment to building a world-class, sustainable community. His role on this project offers a strong team player, who has achieved a national reputation for his work in the urban environment.

He established Bob Close Studio, LLC in late 2012. A landscape architect and urban designer with over 36 years of experience, Bob is well known for his design and communication skills in the Twin Cities and surrounding region. His work has always centered on the creation of engaging, sustainable and liveable environments, whether in the public domain or for private clients.

Credentials

- > Registered Landscape Architect: MN, ND
- > Member and Former President - Minnesota Chapter of the American Society of Landscape Architects (MASLA)
- > Fellow, American Society of Landscape Architects (ASLA)
- > Congress for the New Urbanism (CNU)
- > Urban Land Institute (ULI)
- > Lambda Alpha International, Land Use Organization

Education

- > Bachelor of Landscape Architecture - University of Minnesota

Awards

- > American Society of Landscape Architects Minnesota:
 - + West River Commons, mixed-use development, Merit Award 2006
 - + Ramsey Town Center, Merit Award 2005
 - + Minneapolis Near North Side Master Plan, Merit Award 2003
 - + Lake Street/Midtown Greenway Corridor Framework Plan, Honor Award: 2001
 - + Lake Elmo Old Village Master Plan Merit Award
- > AIA Minneapolis and HPC (Historic Preservation Committee):
 - + Midtown Exchange urban redevelopment, 2006
 - + CityHomes on Park neighborhood revitalization, 2001
- > AIA National Honor Award: Ramsey Town Center, new town design, 2003
- > CUE Award (Committee on the Urban Environment, Minneapolis): Joseph Selvaggio Urban revitalization initiative, 2000
- > Waterfront Planning Award (with Urban Strategies of Toronto): St. Paul on the Mississippi Development Framework, 1998

Relevant Experience

- > Rochester Design Guidelines
- > West Bank TOD Study - Minneapolis, MN
- > DEEP 2100 (Downtown East Elliot Park) Master Plan - Minneapolis, MN
- > West River Commons - Saint Paul, MN
- > Ramsey Town Center - Ramsey, MN
- > North Quadrant Redevelopment - Minneapolis, MN
- > St. Paul on the Mississippi Development Framework - Saint Paul, MN
- > Ford Plant Urban Design Stud - Saint Paul, MN
- > Lake Street/Midtown Greenway Framework Plan - Minneapolis, MN
- > Ramsey Town Center Master Plan - Ramsey, MN (winner of AIA National Honor Award)
- > University of Minnesota Master Plan and Master Plan Update - Twin Cities, MN
- > West Bank Station Area Urban Design Plan - Minneapolis, MN
- > CHS Field, (Saints Ballpark) in historic Lowertown - Saint Paul, MN



DAMON FARBER LANDSCAPE ARCHITECTS